

## Identification Data



May 14, 2021

LAB GROWN DIAMOND  
Certificate No: 311270009

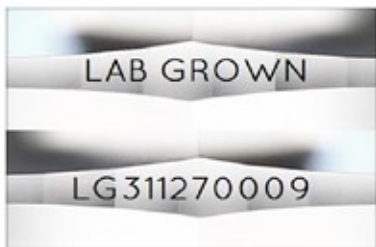
### Gemprint

Gemprint is the unique optical fingerprint for positive identification of your lab grown diamond. Register your lab grown diamond at [www.Gemprint.com](http://www.Gemprint.com) and receive insurance discounts up to 10%.



### Laser Inscription:

The illustration depicts enlarged and approximate appearances of the inscriptions. Girdle laser inscribed "LAB GROWN" and "LG311270009"



## The 4Cs Grading Analysis

GCAL 311270009

LAB GROWN DIAMOND\*

Carat Weight:

6.54

Cut:

Ideal

Shape:

Round Brilliant

Measurements:

11.82-11.93x7.47mm

Hearts:

Excellent

Arrows:

Excellent

Optical Brilliance:

Excellent

Optical Symmetry:

Excellent

Polish:

Excellent

External Symmetry:

Excellent

Girdle Thickness:

SI.Thick

Culet Size:

None

Color:

H

Fluorescence:

None

Clarity:

VVS1

Identifying Characteristic(s):

Cloud

Characteristic Location(s):

Throughout Pavilion

\*Comments: This man-made diamond was grown in a laboratory by the HPHT method, and has the same chemical, physical, and optical properties as a natural earth mined diamond. This diamond is Type II, which means it is devoid of nitrogen impurities.

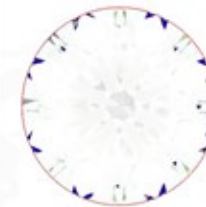
### Photomicrographs:

Actual images of the crown (top) and pavilion (bottom) of this lab grown diamond photographed at magnifications up to 10x.



## Light Performance Profile

### Optical Brilliance Analysis:



Excellent

Brilliance is the overall return of light to the viewer. The brilliance image is a representation of (a) white areas of light return, or brilliance, and (b) dark-blue areas of light loss.



### Optical Symmetry Analysis:



Excellent

The colored areas of the symmetry image are indications of light handling ability, giving a visual representation of proportions and facet alignment.



### Hearts and Arrows:

Precision faceting is visualized as Hearts and Arrows when brilliant cut stones are viewed in specific lighting conditions. Each pattern is the result of facet placement and alignment.



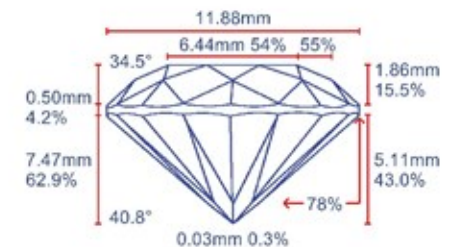
Excellent



Excellent

### Proportion Diagram:

The proportion diagram illustrates the actual dimensions as recorded by optical scanning technology.



**GCAL** GEM CERTIFICATION & ASSURANCE LAB  
ISO 17025 ACCREDITED FORENSIC LABORATORY

580 Fifth Avenue LL-05, NY, NY 10036 USA • T 212.869.8985 • GCALUSA.com

ISO/IEC 17025:2017  
ANAB L2177-1  
Accredited Testing Lab



Guaranteed Lab Grown Diamond Grading Certificate