

## Identification Data



September 4, 2020

LAB GROWN DIAMOND  
Certificate No: 302370006

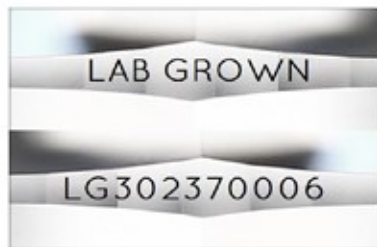
### Gemprint

Gemprint is the unique optical fingerprint for positive identification of your lab grown diamond. Register your lab grown diamond at [www.Gemprint.com](http://www.Gemprint.com) and receive insurance discounts up to 10%.



### Laser Inscription:

The illustration depicts enlarged and approximate appearances of the inscriptions. Girdle laser inscribed "LAB GROWN" and "LG302370006"



## The 4Cs Grading Analysis

GCAL 302370006

LAB GROWN DIAMOND\*

Carat Weight:

3.17

Cut:

Shape:  
Measurements:

Ideal  
Round Brilliant  
9.39-9.43x5.85mm

Hearts:  
Arrows:  
Optical Brilliance:  
Optical Symmetry:  
Polish:  
External Symmetry:  
Girdle Thickness:  
Culet Size:

Excellent  
Excellent  
Excellent  
Excellent  
Excellent  
Medium-SI.Thick  
None

Color:

Fluorescence:

E  
None

Clarity:

Identifying Characteristic(s):  
Characteristic Location(s):

VVS1  
Cloud  
Throughout Pavilion

\*Comments: This man-made diamond was grown in a laboratory by the HPHT method, and has the same chemical, physical, and optical properties as a natural earth mined diamond. This diamond is Type II, which means it is devoid of nitrogen impurities.

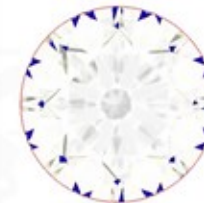
### Photomicrographs:

Actual images of the crown (top) and pavilion (bottom) of this lab grown diamond photographed at magnifications up to 10x.



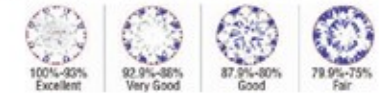
## Light Performance Profile

### Optical Brilliance Analysis:



Excellent

Brilliance is the overall return of light to the viewer. The brilliance image is a representation of (a) white areas of light return, or brilliance, and (b) dark-blue areas of light loss.

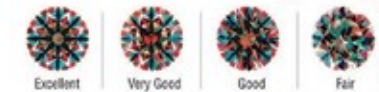


### Optical Symmetry Analysis:



Excellent

The colored areas of the symmetry image are indications of light handling ability, giving a visual representation of proportions and facet alignment.



### Hearts and Arrows:

Precision faceting is visualized as Hearts and Arrows when brilliant cut stones are viewed in specific lighting conditions. Each pattern is the result of facet placement and alignment.



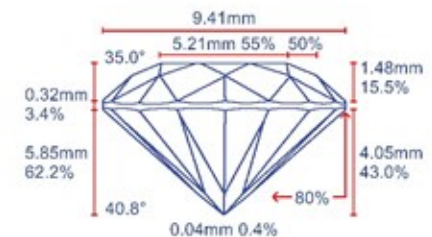
Excellent



Excellent

### Proportion Diagram:

The proportion diagram illustrates the actual dimensions as recorded by optical scanning technology.



**GCAL** GEM CERTIFICATION & ASSURANCE LAB  
ISO 17025 ACCREDITED FORENSIC LABORATORY

580 Fifth Avenue LL-05, NY, NY 10036 USA • T 212.869.8985 • GCALUSA.com

ISO/IEC 17025:2017  
ANAB L2177-1  
Accredited Testing Lab



Guaranteed Lab Grown Diamond Grading Certificate